



## TC-5910C Shield Box

### Application

The TC-5910C Shield Box provides RF isolation and signal connections necessary for mobile testing. TC-5910C has two RF ports and two EMI filtered data ports. With RF coupling accessories and filtered control ports, the TC-5910C makes an ideal solution for testing mobiles, Bluetooth and small RF devices on the test benches of manufacturing, R&D, service, and QC.

### Features

- Reliable High RF Shielding up to 2.5GHz
- Manual operation
- 2 RF ports and 2 EMI filtered data ports
- Easily customizable to meet various test needs
- Shock absorber on lid



Front view

### Specification

- Shielding Effectiveness:
  - > 70dB, from DC to 2.5GHz, including 1000pF pi filter
  - > 60dB, from DC to 2.5GHz, including 100pF pi filter
- Data Connectors:
  - DB9(p) outside and DB9(s) inside, 1000pF pi filter
  - DB25(p) outside and DB25(s) inside, 1000pF pi filter
- RF Connectors: 2 N(f) outside and SMA(f) inside
- Inner Dimension: 4.72(W) x 8.86(D) x 4.53(H) in
- Outer Dimension: 8.07(W) x 16.45(D) x 6.24(H) in
- Weight : approx. 4kg
- Packed Weight: approx. 6 kg
- Accessories Supplied:
  - 4002-0002, RG223, N(m) to N(m) cable, 1m, 1pc.
  - 4003-0004, DB9(p) to DB9(s) cable, 1m, 1pc.
  - 4003-0005, DB25(p) to DB25(s) cable, 1m, 1pc.



Rear view

### Ordering Information

**TC-5910C**, Shield Box, fitted with DB9 and DB25, 1000pF pi filter

#### OPTIONAL REPLACEMENT CONNECTORS

- **M591001A\***, 100pF pi filter in DB9 connector instead of 1000pF pi filter
- **M591002A\***, 100pF pi filter in DB25 connector instead of 1000pF pi filter



# Concentric Technology Solutions Inc

## Testing Solutions for the Wireless Industry

TC-5910C Shield Box Data Sheet

- **M591003A**, USB2.0 Interface instead of DB9 connector
  - Shielding Effectiveness:  
>60dB, 900MHz, 1.8GHz, 2.4GHz
  - Accessories Supplied:  
4008-0017, USB A(p) to USB A(p) cable, 1m, 1pc  
4008-0018, USB A(p) to USB A(s) cable, 50cm, 1pc  
Instead of 4003-0004, DB9(p) to DB9(s) cable, 1m, 1pc

**4006-0004\***, RG400S, N(m) to N(m) cable, 1m

**4009-0006\***, DB9(s) to USB A(p) cable, 1m

**4009-0007\***, DB9(p) to USB A(s) cable, 15cm

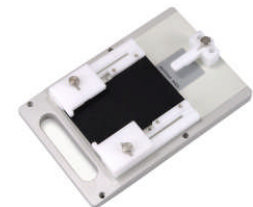
\* Suitable for USB1.1 and Bluetooth device test application

### **TC-93020A**, Flat Type Antenna Coupler

- Frequency Range : 0 ~ 3GHz
- Insertion Loss : 8 ~ 20dB
- VSWR : Better than 1: 1.7
- RF Connector : SMA(f)
- Weight Total : 1kg
- Patent # 0468240
- Accessories Supplied :  
4005-0035, SMA(m) R/A to SMA(m) cable, 13cm, 1pc.  
4005-0020, N(m) to SMA(m) cable, 1m, 1pc



TC-93020A



TC-93020A fitted with F930201A

### **F930201A**, Customized DUT Holder

### **TC-93030A**, Flat Type Antenna Coupler

- Frequency Range : 0 ~ 3GHz
- Insertion Loss : 6 ~ 20dB
- VSWR : Better than 1:1.7
- RF connector : SMB(f)
- Weight Total : 1kg
- Patent # 0468240
- Accessories Supplied :  
4005-0015, SMA(m) to SMB(m) cable, 13cm, 1pc.  
4005-0016, N(m) to SMB(m) cable, 1m, 1pc.  
C93030A-A100, Bar Bracket, 2pcs.



TC-93030A



TC-93030A fitted with F930301A

### **F930301A**, Customized DUT Holder

### **F59102A**, MMM-XXXX-YY, Fixture for TC-5910C

MMM-XXXX-YY is a unique fixture code that will be provided by Concentric Technology Solutions Inc.